



Dapro Worker 1 Coverall Kneepads

PRODUCT CODE: WWOR1CKULW-SB*

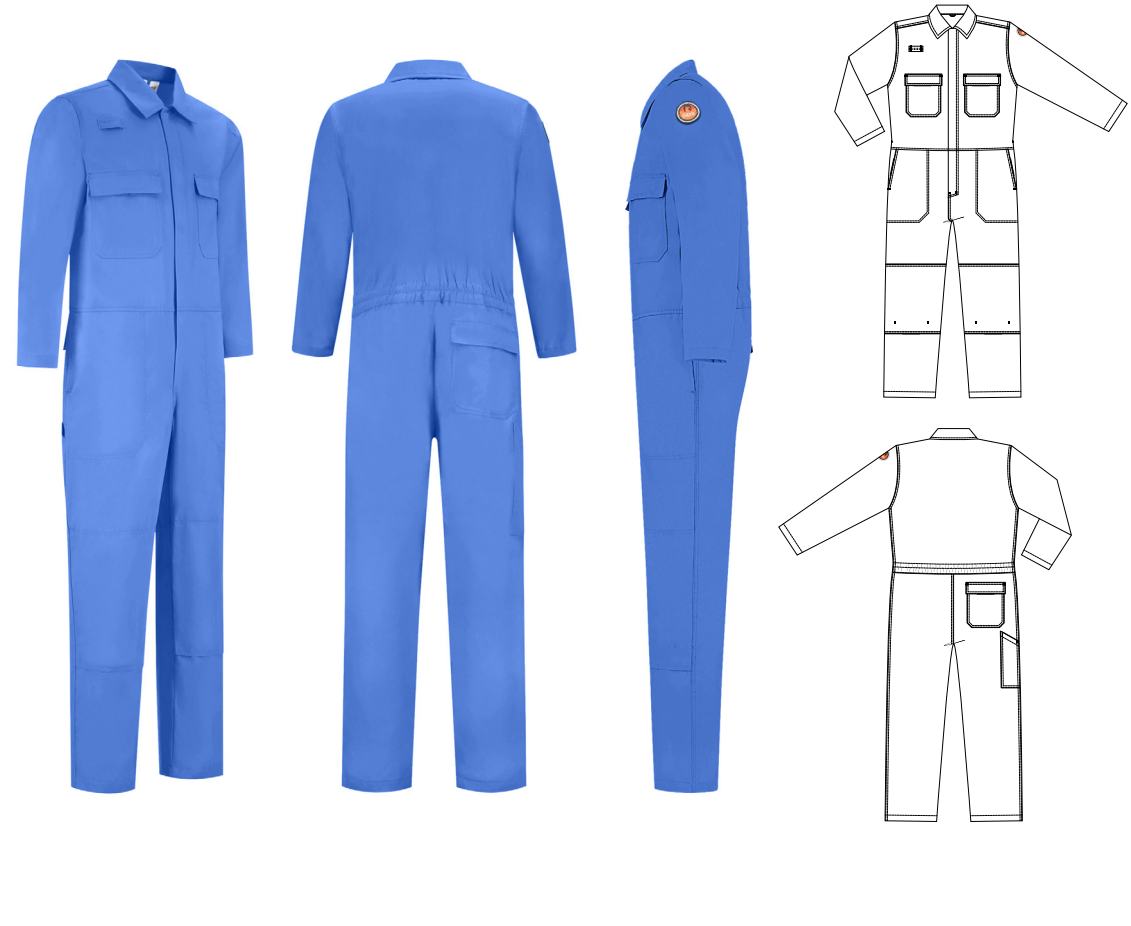
Fabric information



- 100% Cotton
- 200 GSM

Features

- > Suitable for Tropical climate
- > Center front with concealed metal snap button closure
- > **Gas detector loop** on chest at right hand side
- > Chest pockets with safety flap and concealed metal snap button closure
- > Elastic waistband for improved fit
- > Side pockets
- > **Side vents** with safety flap and concealed metal snap button closure behind side pockets
- > Back pocket with safety flap and concealed metal snap button closure at right hand side
- > Slanted tool pocket at right hand side leg
- > **Kneepad pockets**



Available in colors:



Available on request: EU 42-72



Extensive
Bartacks



5 Thread
Safety Stitch



Single
Gas Loop